

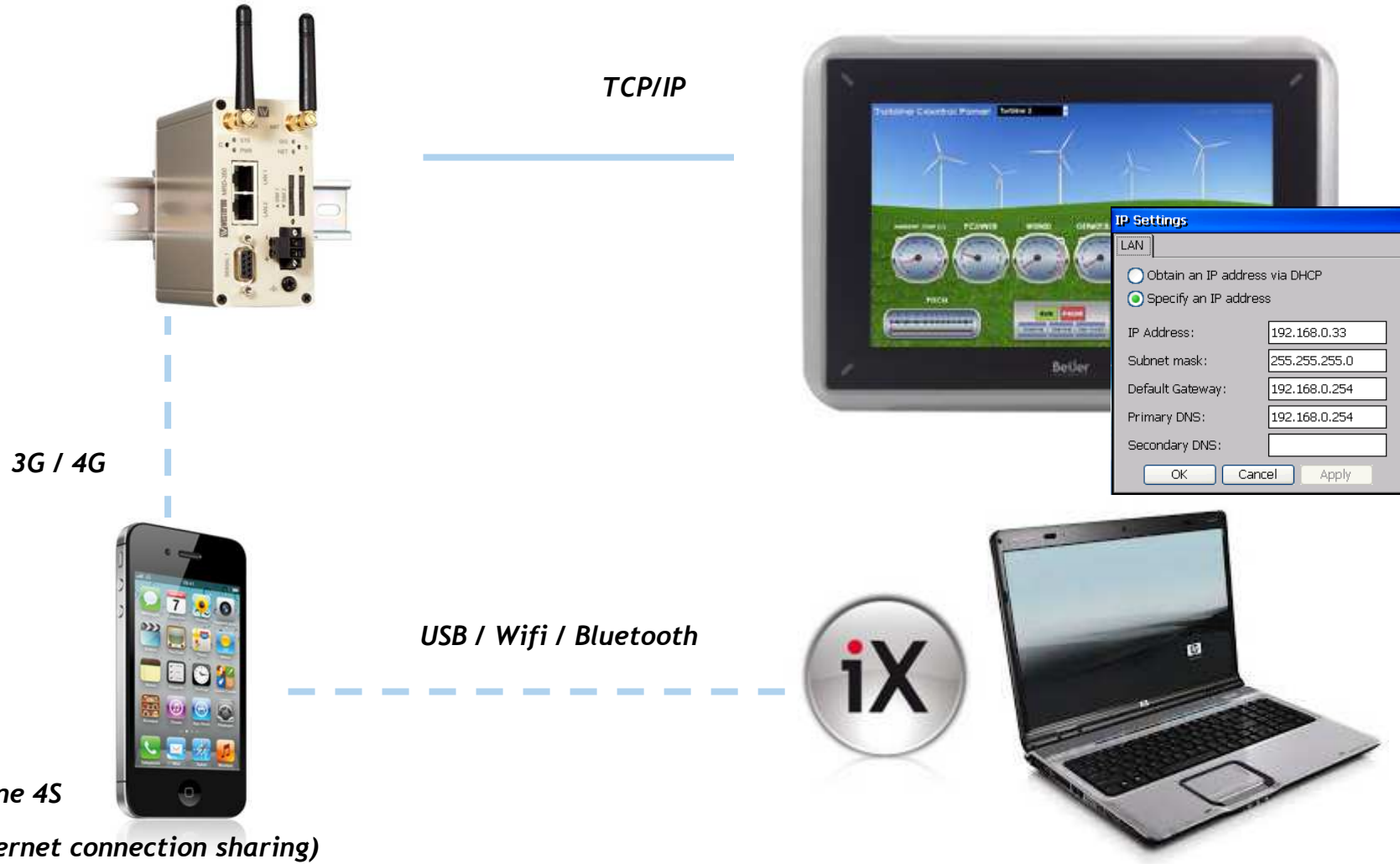
Remote download project to iX panel

Router ADSL/VDSL : Westermo MRD-350

(IP : 49.327.31.89 - Gateway : 192.168.0.254)

iX Panel T7A

(192.168.0.33)



Router Settings (alternative with Westermo router)

Industrial mobile broadband / 3G router : Westermo MRD-350

ix - Which ports needs to be open to support remote download with Westermo MRD-3x0 (QA: 9999 TCP+UDP)

Port 9999 is used both TCP and UDP.

UDP is used for the Panel Discovery functionality and the initiation of the transfer, i.e. set the terminal into transfer.

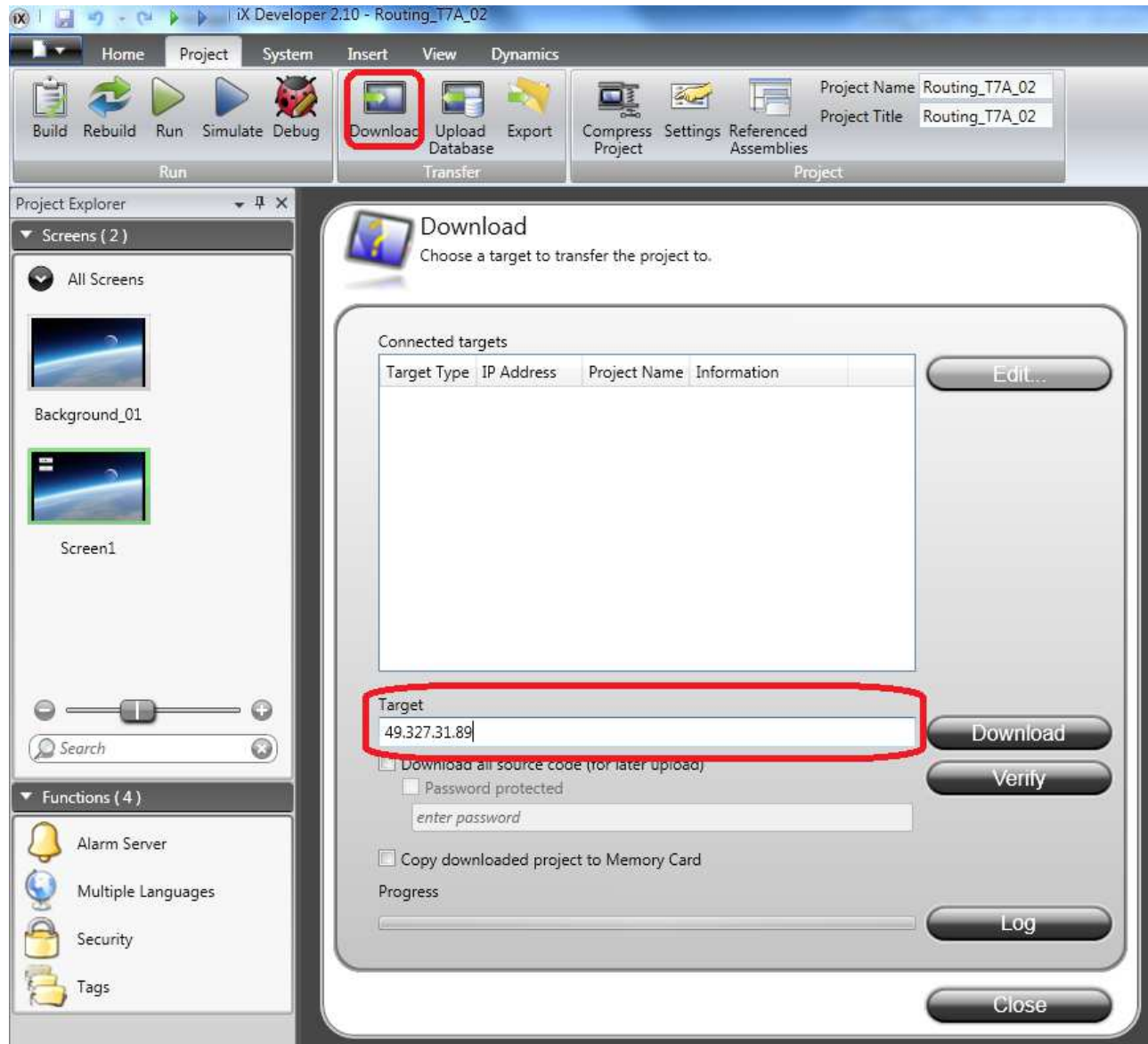
The application is thereafter downloading using TCP.

Make two new rules for the portforwarding in your MRD-3x0 according to the picture.

<input checked="" type="checkbox"/>	TCP	WLS	Any	9999	192.168.0.33: n/a		
<input checked="" type="checkbox"/>	UDP	WLS	Any	9999	192.168.0.33: n/a		
<input type="button" value="Add new port forward"/>							



iX Developer : Download



How To Increase TimeOut in iX Developer

*The transfer timeout has been changed to around 60s and is specific to each panel type.
You are able to change the timeout in the resource xml file for the different targets.*

The resource files can be found here...

[C:\Program Files \(x86\)\Beijer Electronics AB\iX Developer 2\Bin\Resources\Terminals](C:\Program Files (x86)\Beijer Electronics AB\iX Developer 2\Bin\Resources\Terminals)



```
C:\Program Files (x86)\Beijer Electronics AB\iX Developer 2\Bin\Resources\Terminals\iXPanelT10A.xml - Notepad++ [Administrator]
Fichier  Édition  Recherche  Affichage  Encodage  Langage  Paramétrage  Macro  Exécution  Compléments  Documents  ?
iXPanelT10A.xml
1  <Terminal Name="iX T10A" PanelBaseName="T10A" PanelTypeGroupName="TxA" Platform="WindowsCE
2  SupportDipSwitch="false" TimeoutForTransfer="100">
3  <Image Width="852" Height="692">iXPanelT10A.png</Image>
4  <Thumbnail>Thumbnails/iXPanelT10A.png</Thumbnail>
5  <Screen>
6  <X>106</X>
7  <Y>106</Y>
8  <Width>640</Width>
9  <Height>480</Height>
10 <ItemWidthScaleFactor>0.8</ItemWidthScaleFactor>
```

Win Time & Money !

De Paris

À Malmö

1257.6 km

100 km/h


12h 34min

0:07 21.3.2014
pause: 2h 30min

94.3 L

169.74 EUR

ajouter des points intermédiaires **DISTANCE!** | directions | prix du carburant | péages | limites de vitesse



Google

Données cartographiques ©2014 Basarsoft, GeoBasis-DE/BKG (©2009), Google

Plan

+

-

Signaler une erreur cartographique



Beijer

ELECTRONICS